

NSF

FALL COLLECTION 2012

コレクション2012秋

7/30-8/15

8/30-9/15



FRANCIS LIGHTWEIGHT MOHAIR SWEATER HEATHER GREY 2404 + NSF DENIM 9043-HUS "HUSTON"

PHOTOGRAPHY BY MATT WIGNALL

CLEMENCE TRENCH IN CAMEL 3059 + ADAMS TEE MINERAL 2427 + 9043-HUS "HUSTON"



Founded in 2005 by Nick Friedberg, NSF has earned a loyal following for its clean aesthetic, understated cool and eminently wearable collections. Blending contemporary attitude with the understated softness of its menswear roots, the brand continues to expand and evolve. Women seek NSF for its quiet ease, confident attitude and attention to detail.



ANNETTE LACE TEE GREY 1057 + MADELEINE SILK SKIRT BLACK 1040

ニックFriedbergが2005年に設立され、NSFは、クールと際立ってウェアラブルのコレクションを控えめに、そのきれいな美学のために熱心なファンを獲得しています。それは紳士服のルーツの控えめな柔らかさと現代的な態度をブレンドした、ブランドは拡大し、進化を続けています。それは静かな容易さのための女性のシークNSF、細部への自信ある態度と注意。

NSF

CAIN LACE JEAN GREY 9074 + TAYLOR SILK BLOUSE MINERAL 2426





GABRIELLE SILK PLEATED TEE SHIRT DRESS IN TILE PRINT 1021

LAVE à L'ENVERS
LAVAGE à FROID
Sécher à BASSE TEMPERATURE
NE PAS REPASSER

100% 綿のコーデュロイ

nsfclothing.com

**MADE IN USA
WITH 100% COTTON**

NSF



ADAMS TEE MINERAL 2427 + HARPER SUTASH VEST BLACK 3061 + NSF DENIM 9043-HUS "HUSTON"



SOPHIA SILK TILE PRINT BLOUSE 1059 + NSF DENIM 9043-HUS "HUSTON"

ANNETTE LACE TEE GREY 1057 + MADELEINE SILK SKIRT BLACK 1040 + BILLY LEATHER JACKET BROWN 3055-BBL





HALLE SLEEVELES SILK BLOUSE MULBERRY 2384 + MORGAN CARDIGAN CAMEL 2413 + NSF DENIM 9043-DKH "DARK HARLAN"

ADAMS TEE MINERAL 2427 + JUDD SUTASH SILK MINISKIRT BLACK 1007FALL



ちょうど戻ってレイアウト
される、十分にドレスアッ
プして、それでも一緒に引っ
張ら、まだ控えめなスタイリング



NINA RUFFLE SHIFT DRESS BLACK 1042

QUIN SILK SHIRT MINERAL/BLK 2382 + NSF DENIM 9043-DKH "DARK HARLAN"





DEVIN WASHED LEATHER JACKET BLACK 3063 + HAINES STRETCH TERRY DOLMAN CHARCOAL 2409 + MAXON SOFT CARGO CAMEL 9065

BILLY SUEDE JACKET WITH DETACHABLE CURLY SHEARLING COLLAR 3055-NBFUR + ADAMS TEE WHARF 2427 + NSF DENIM 9043-HUS "HUSTON"





ELLIS DOWN JACKET BLACK 3059 + FRANCIS LIGHTWEIGHT MOHAIR SWEATER HEATHER GREY 2404 + NSF DENIM 9043-DKH "DARK HARLAN"





AGNES SWEATER ROBE BLACK/WHITE 2423 + LIZ HENLEY HEATHER GREY 2434 + LINDEN STRETCH TERRY LEGGING IN CHARCOAL 9077

WALKER DRAPED HOODIE HEATHER GREY 2420HG + ADAMS TEE WHARF 2427 + RAE CORD 5 POCKET 9043-CORD CAMEL





IGGY CORD BLAZER CAMEL 3066 + ADAMS TEE HEATHER GREY 2427HG + NSF DENIM 9043-HUS "HUSTON"

*"Relaxed, casual
best describe
We believe in
casual luxury
Our customer
less shape
vibe. NSF is
brand and
the attitude of
Los Angeles.
collection is
want to offer
more range
silhouettes and
The look is a mix
sophisticated. It's
just dressed up
both **laid back** and
gether, styled and*

*Jamie Haller
NSF Creative Director*

*& cool are words that
the **NSF** customer.
the concept of
& easy elegance.
wants a time-
with a hip casual
a **west coast**
perfectly exudes
a place like
The women's
evolving. We
our customers
with new
fabrications.
of casual and
meant to be
enough, to be
still pulled to-
yet understated."*



NSF



QUINTIN CHEQUE BUTTON DOWN GREY 2325FA + HARLEY SLIM SKIRT CAMEL 9069

JACKSON PULLOVER SWEATER GREY MELANGE 2386 + RAE CORDUROY 5 POCKET CAMEL 9043-CORD





LANA SPACE DYE PONCHO SWEATER BURG/GOLD 2424

ECHO RUGBY TEE BURGANDY 2412 + NSF DENIM VINTAGE BELLBOTTOM 9046-CHE "CHELLE"





GABBY SWEATER COAT LIGHT CAMEL 2392 + KEMP MINISTRIPED BUTTON DOWN GREY 2325-STRIPE + MAXON SOFT CARGO BLACK 9065

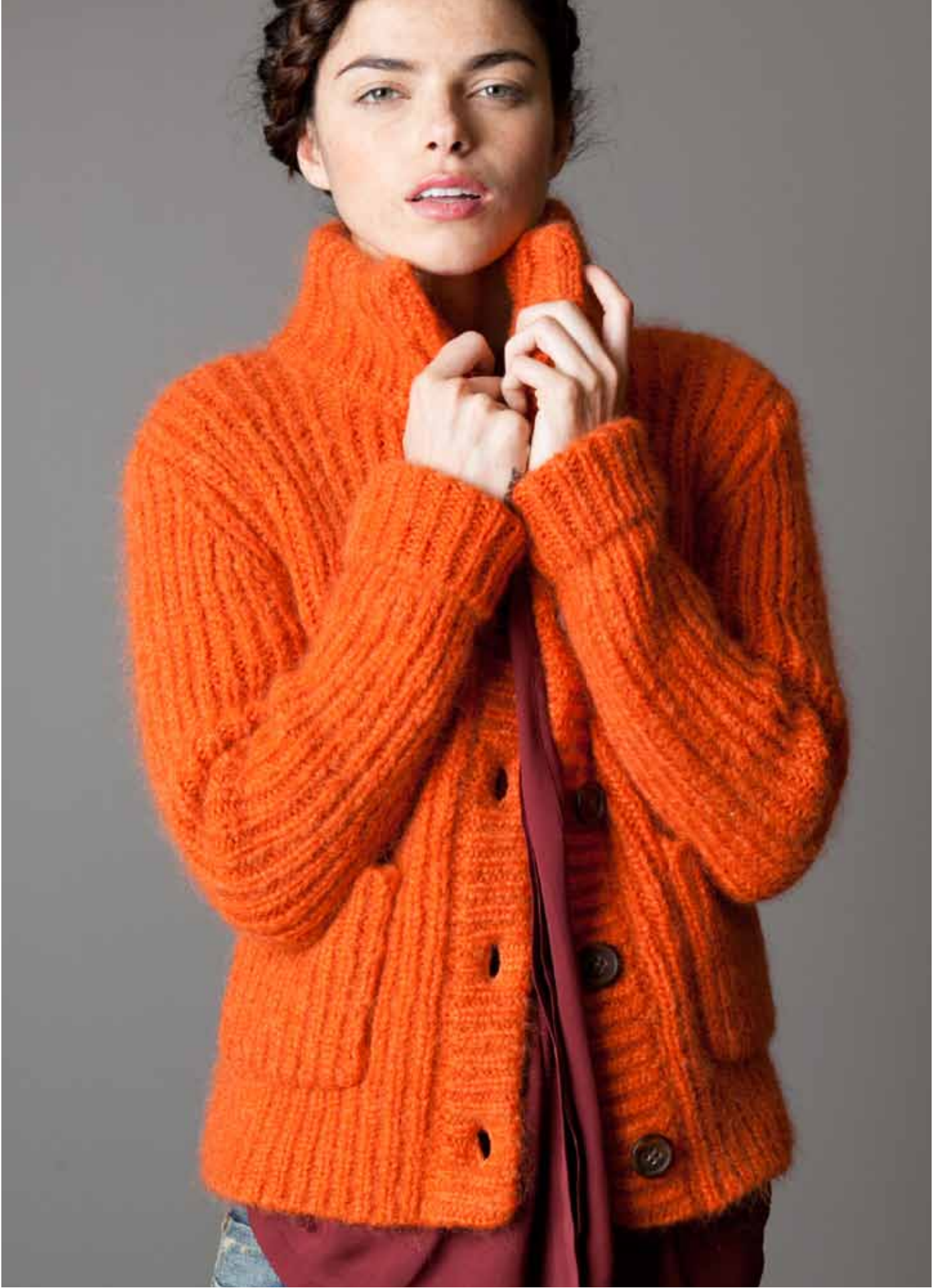
HAINES STRETCH TERRY DOLMAN CHARCOAL 2409 + MAXON SOFT CARGO BLACK 9065





ABBOTT TWO TONE HENLEY NAVY 2374 + RUE RELAXED SLIM POCKET SWEATPANT IN MULBERRY MELANGE TERRY 9076

OAKES CHUNKY MOHAIR SWEATER ORANGE 2389 + QUIN SILK BLOUSE MULBERRY 2383





ELLIOT DRAPED SWEATER VEST IN MACCHU MULTISTITCH 2431 + LIZ KNIT HENLEY HEATHER GREY 2434 + NSF DENIM 9043-HUS "HUSTON"

FAYE LOOSE STITCH WOOL CASHMERE SWEATER IN BLACK MELANGE 2425 + NSF DENIM 9043-JAC "JACKSON"





RACHEL WOOL DOUBLEKNIT PEA COAT NAVY 3067 + QUIN SILK BLOUSE MULBERRY 2383 + NSF DENIM 9043-DKH "DARK HARLAN"

